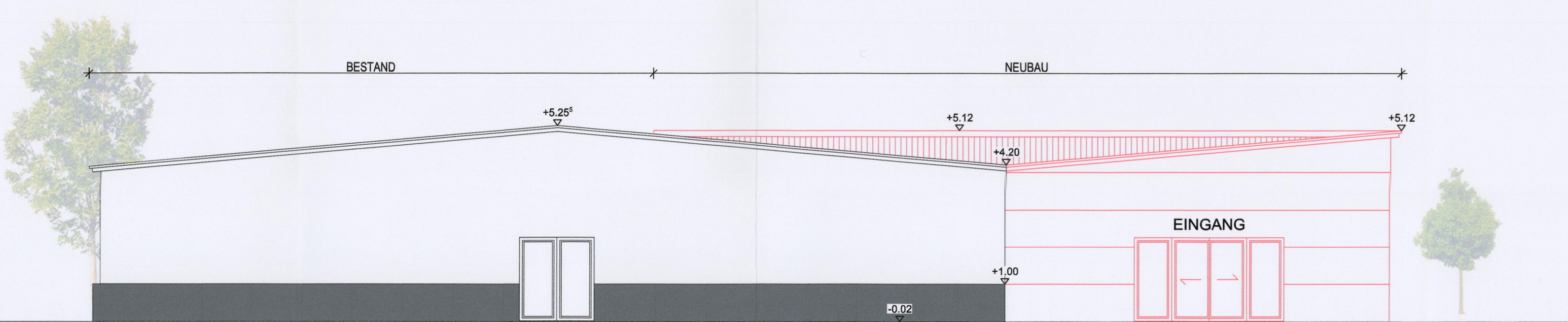
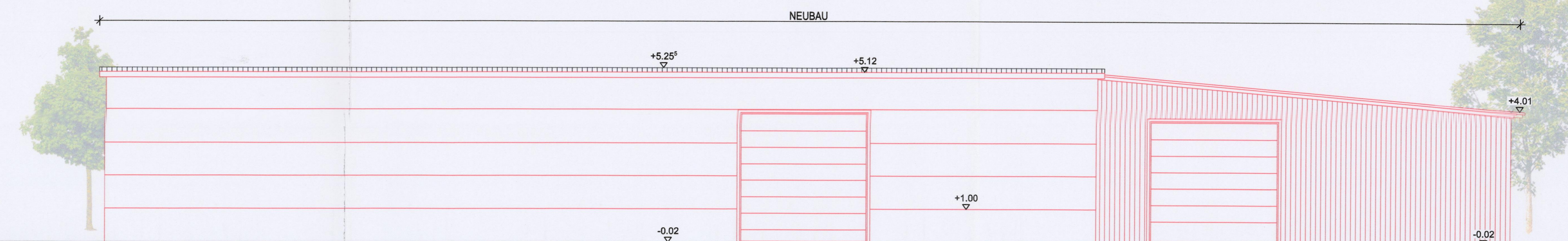


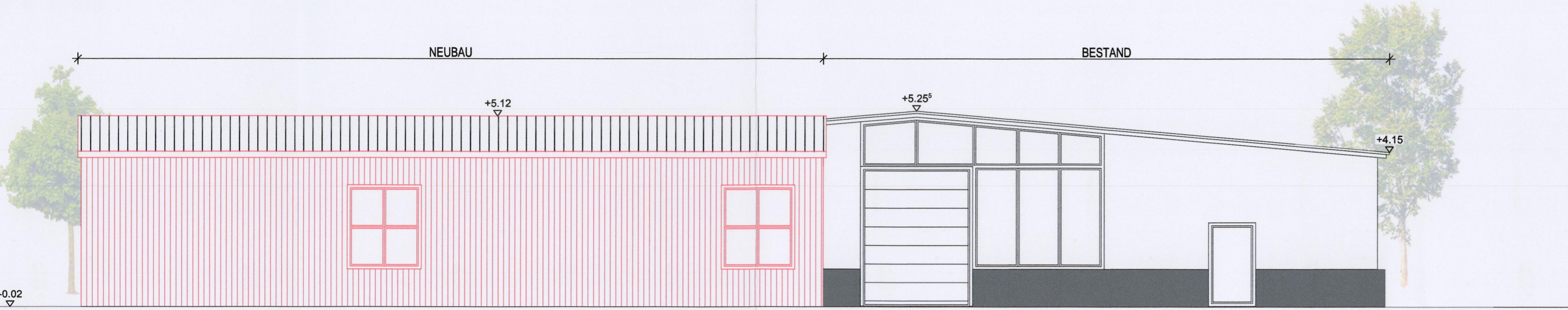
GRUNDRISS EG



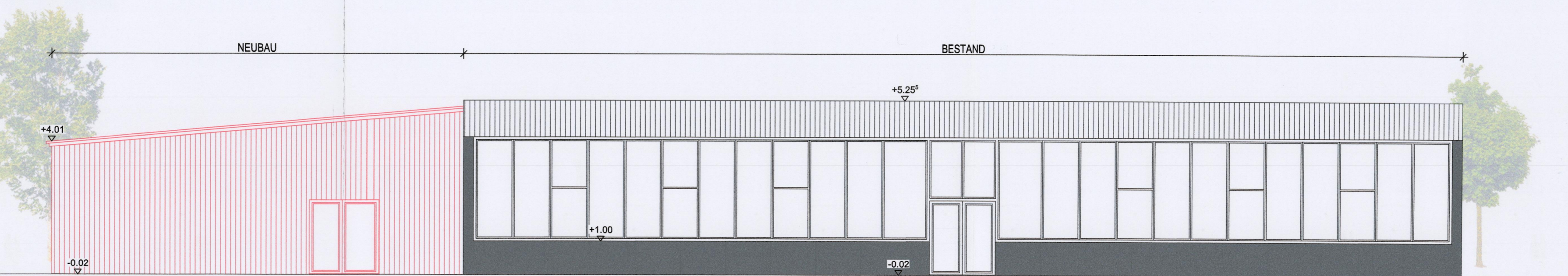
WESTEN



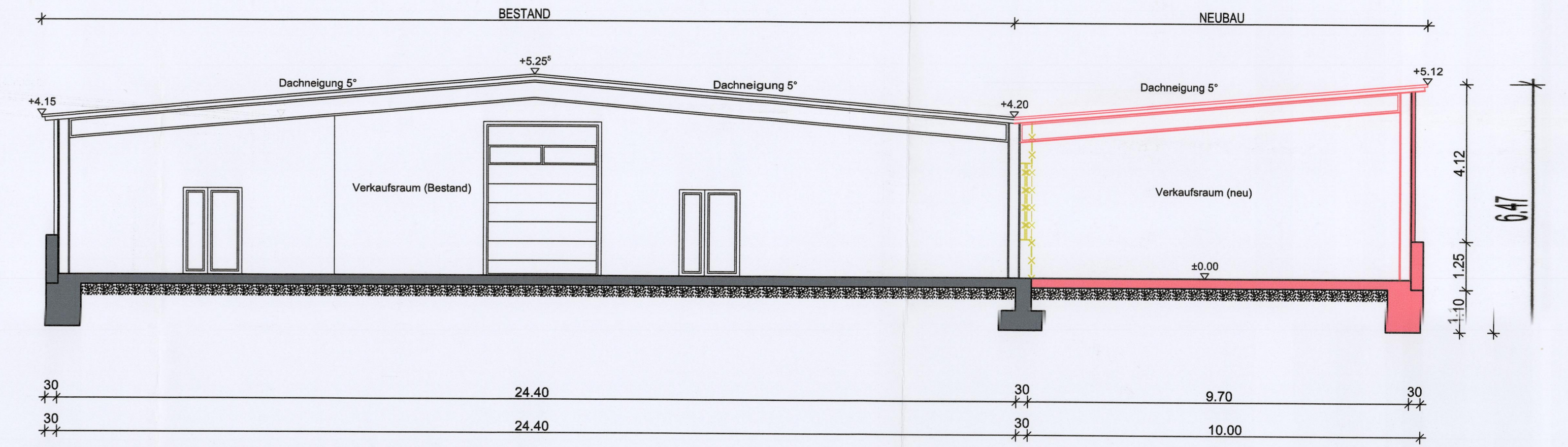
SÜDEN



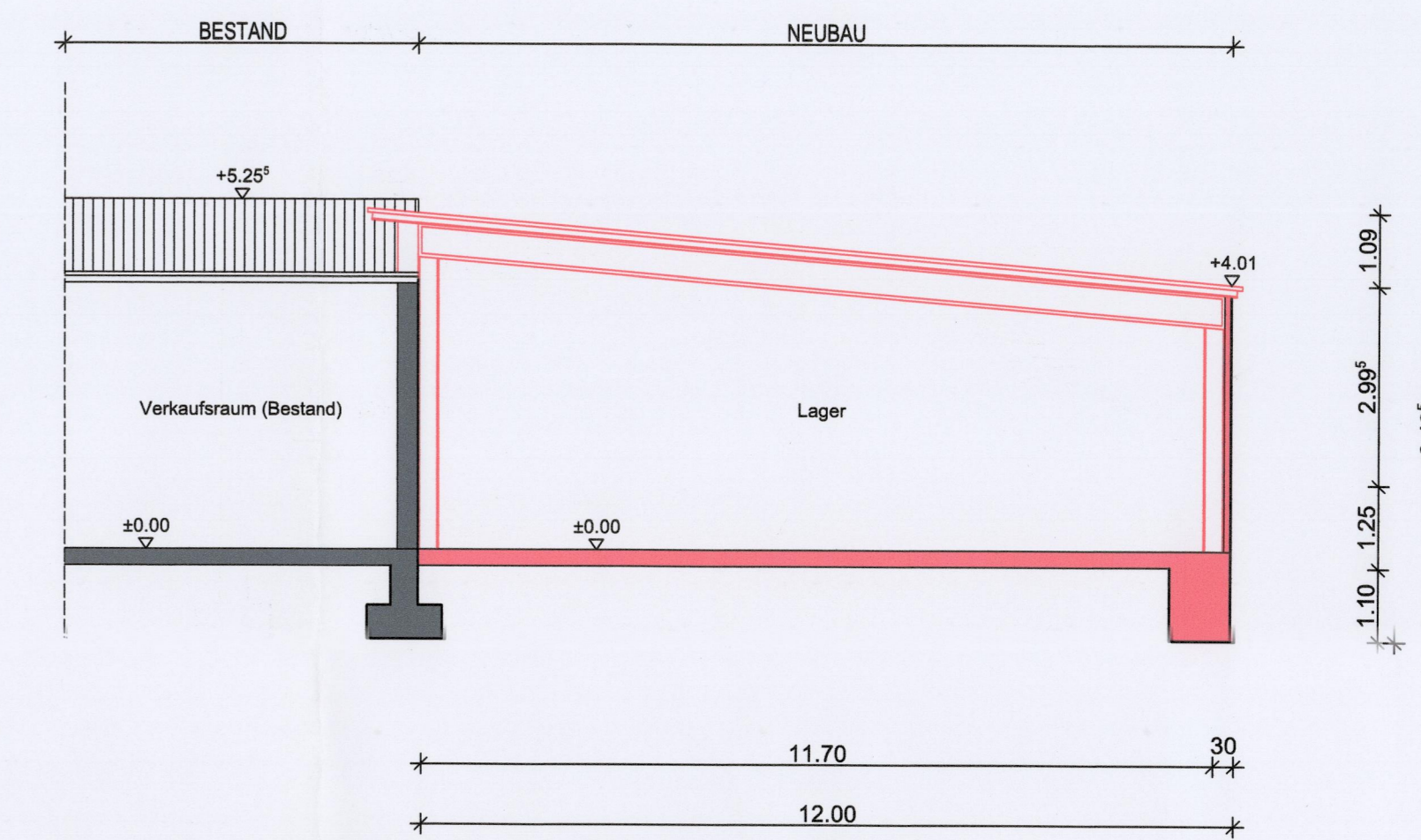
OSTEN



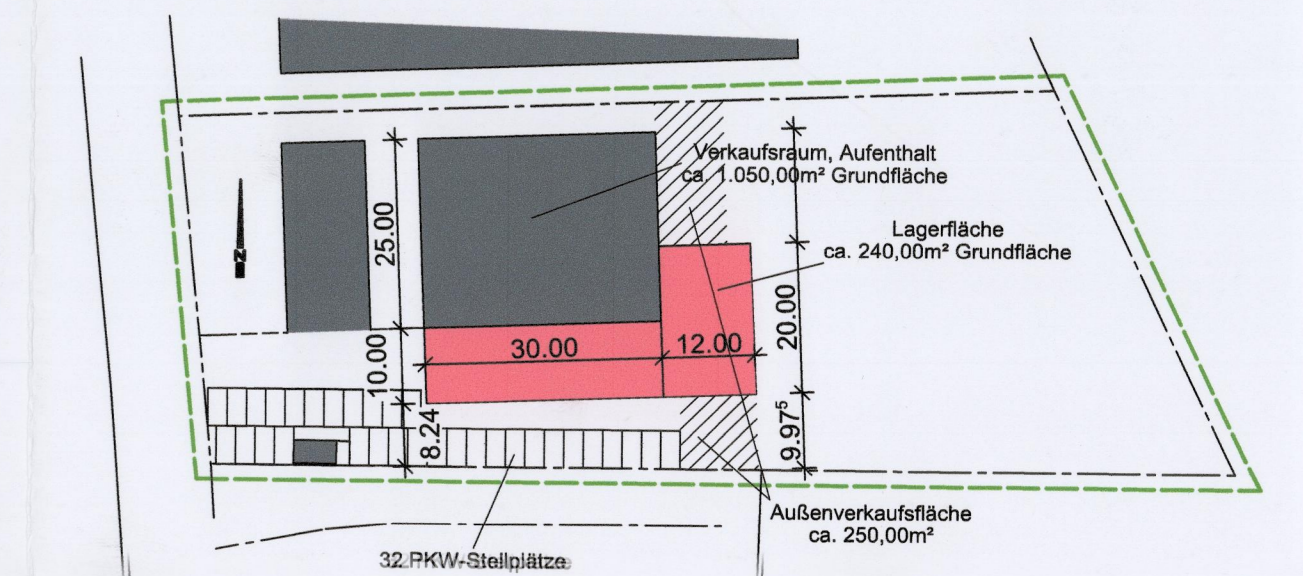
NORDEN



SYSTEMSCHNITT A-A



SYSTEMSCHNITT B-B



LAGEPLAN 1:1000

ENTWURF - 3
VORHABENS- U. ERSCHLIEßUNGSPL.
 PLEIN FELD, 01.10.2018

BAUHERR
 Walter Engeler
 Hauptstraße 2
 91788 Pappenheim

PROJEKT NR.
 2018-29

MASSTAB
 1:100

Planungsbüro Albert
 Hochbau - Energieberatung - Visualisierung
 Member 2 - 91785 Pleinfeld
 T: 09144-300
 F: 09144-305
 M: info@planungsbuero-albert.de
 WWW.PLANUNGSBUERO-ALBERT.DE